

Novelties of the Fall Announces for 2025





MES2420B-24D access switches with multispeed ports

MES2410-08DP

Released in April 2024

- 80 Gbps
- 8 × 2.5G PoE/PoE+
- 2 × 10G SFP+
- 1 PSU

MES2420B-24D

Instantly available

- 200 Gbps
- 24 × 2.5G
- 4 × 10G SFP+
- 1 PSU + Cell battery



Uninterruptible power

MES2420B-24D switches can be equipped with a rechargeable battery to ensure power supply in case of the 230 V primary power supply loss

MES3300-xx series aggregation switches



Order now



MES3300-08F

Bandwidth
96 Gbps

Interfaces
4 × 1G SFP
4 × 1G Combo
4 × 10G SFP+

MES3300-16F

Bandwidth
112 Gbps

Interfaces
12 × 1G SFP
4 × 1G Combo
4 × 10G SFP+

MES3300-48F

Bandwidth
176 Gbps

Interfaces
48 × 1G SFP
4 × 10G SFP+

MES3300-24F

Bandwidth
128 Gbps

Interfaces
20 × 1G SFP
4 × 1G Combo
4 × 10G SFP+

16K

MAC
addresses

12K

IPv4 Unicast
routes

8

Units
in stack

1+1

Redundant
power modules

Data center switch MES5310-48



Support for EVPN/VXLAN technology implemented in the devices enables networking with a simple, high-performance and scalable architecture for Leaf-Spine (Cloze network) data centers



MES5400-48 «Headliner»

- Throughput - 6.4 Tbps
- Up to 2 PSUs (AC/DC)

MES5410-48

- Throughput - 3.6 Tbps
- Up to 2 PSUs (AC/DC)

MES5310-48

Instantly available

- Throughput - 2.16 Tbps
- Up to 2 PSUs (AC/DC)
- New color

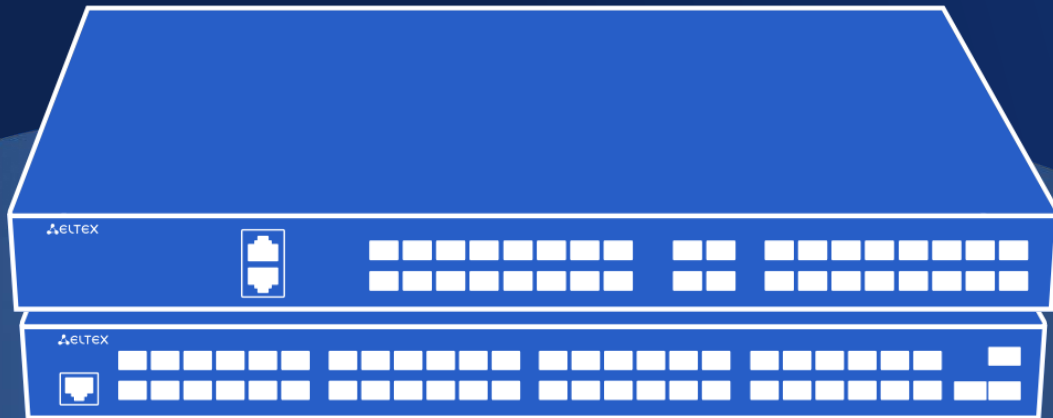
- Non-blocking architecture
- Front-to-Back cooling
- Dual ventilation system

Data center switches of high performance

In closest development



In development



3Q2025

MES5700-32

Bandwidth

12.8 Tbit/s

Interfaces

2 × 10G SFP+

32 × 400G QSFP-DD

4Q2025

MES5600-24

Bandwidth

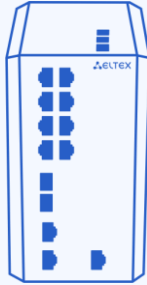
9.6 Tbit/s

Interfaces

24 × 100G QSFP28

6 × 400G QSFP-DD

Contemporary Industrial switches in roadmap



2Q2025

MES3510S-08P

Throughput

24 GBPS

Power supply

DC – power supply
with two inputs

Interfaces

8 × 1G
PoE/PoE+
4 × 1G SFP

POE budget

240 Watt

In development



3Q2025

MES3510DS-24F

Throughput

128 GBPS

Power supply

1+1 – replaceable
power units

Interfaces

16 × 1G SFP
8 × 1G Combo
4 × 10G SFP+

In development

MES3510S-08P and **MES3510DS-24F**
are Industrial Switches with SyncE
Option

SyncE (Synchronous Ethernet)
synchronization provides highly
accurate network timing, essential
for applications requiring precise
time synchronization

Service gateway ESR-3200L



- Data routing
- Multi-protocol Label Switching (MPLS)
- Construction of secure network perimeter (NAT, Firewall)
- Intrusion prevention and detection (IPS/IDS)
- Filtering of network data by various criteria (including filtering by applications)
- Organization of secure network tunnels between different offices of a company



ESR-1500

- ≈ 12 Gbit/s
- 4 × 1 G Combo BASE-T/BASE-X SFP
- 4 × 1G BASE-T
- 4 × 10G SFP+

ESR-3200L

- ≈ 20-25 Gbit/s
- 8 × 10G SFP+ 4 × 25G SFP28
- 2 PSUs

Instantly available

ESR-3200

- ≈ 45-47 Gbit/s
- 12 × 25G SFP28
- 2 PSUs

ESR service gateways firmware release notes



Version 1.24

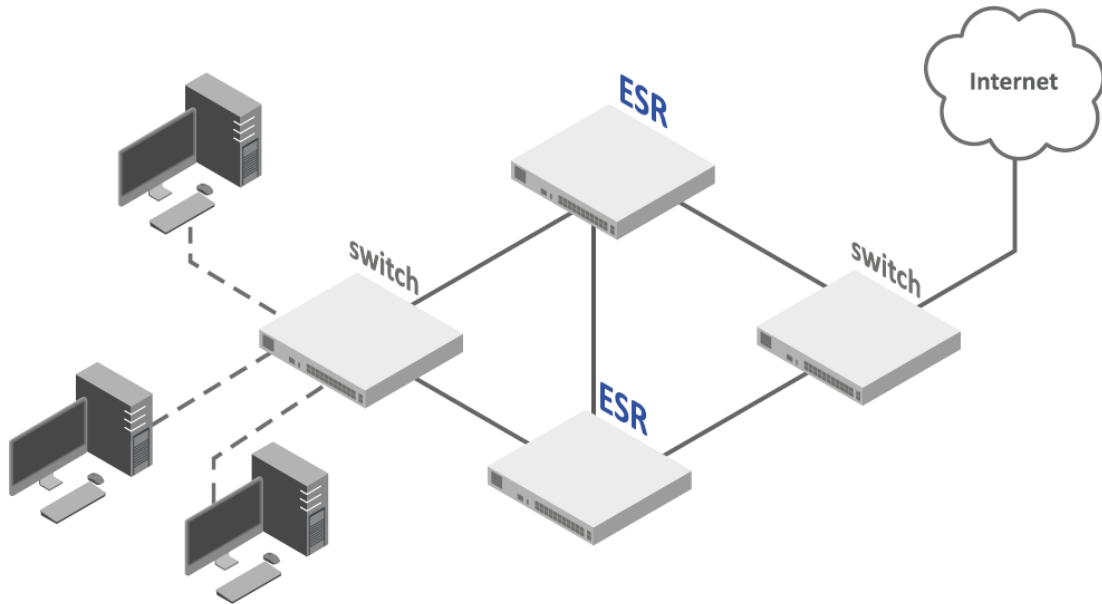


- Implemented clustering functionality in Active-Standby mode
 - Implemented Application Firewall for IPv6
 - Implemented protection against DoS/DDoS attacks for IPv6
 - Implemented web filtering support for https protocol
-
- vESR is a virtual solution that is installed on a server and uses its computing power for tasks
 - vESR works with static and dynamic routing. The main dynamic routing protocols OSPFv2/v3, IS-IS, BGP, RIPv2 and RIPv6 are supported. A Prefix List is available to select the most successful routes

High-availability cluster of Service Routers



New option



- Redundancy of routers and all connections in the cluster
- State synchronization for quick switchover in case of failure (failover)
- Centralized management, configuration and monitoring of the cluster
- Configuration synchronization
- Replacing one router with a cluster does not require reconfiguration of neighboring devices

ESR models to be released in 2025



In development



2Q2025

ESR-2100

Interfaces

8 × 1G SFP
8 × 10G SFP+

Power supply

1+1 – replaceable
power units

3Q2025

ESR-3250

Interfaces

8 × 1G Combo
4 × 25G SFP28

Power supply

1+1 – replaceable
power units 70 Gbps

4Q2025

ESR-3350

Interfaces

8 × 1G Combo
4 × 50G SFP56

Power supply

1+1 – replaceable
power units
100 Gbps

MPLS router ME2001 with SyncE

Order now

 Air stream from left to right



Support of SyncE and PTPv2

No backside access is needed for maintenance. Front access to the power supplies and ventilation module. All redundant units are replaceable while the unit is running

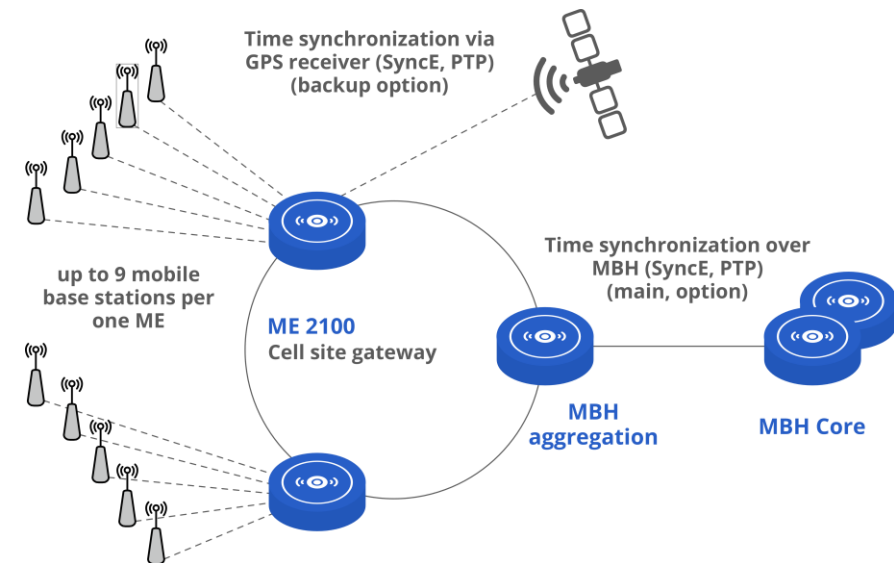
Available for order

ME2001

Performance
300 Gbit/s

Power supply
2 PSUs

Ventilation
1 ventilation module



WOP-30LI: outdoor industrial access point



- PoE 48 V/56 V (IEEE 802.3af-2003), from 12V power source
- Up to 50 users
- Centralized network management and monitoring using SoftWLC/WLC
- 2.4/5 GHz 802.11ax
- MU-MIMO 2x2
- 802.11r/k/v seamless roaming
- 2 Ethernet 2.5G ports, 2xSFP (1G)



WOP-30L



- PoE+ power supply (IEEE 802.3at-2009)
- 4 SMA-type connectors (female) for connecting external antennas (Omni, sector, panel, etc.)
- IP-65

WOP-30LS



- PoE power supply (IEEE 802.3af-2003)
- Embedded antennas
- IP-65

WOP-30LI



- PoE power supply (IEEE 802.3af-2003)
- Power from 12V power source
- N-type connectors
- IP-67

Instantly available

Wi-Fi-7 Enterprise Access points



WEP-550K



- Wi-Fi 7 (802.11be)
- 2,4/5/6 GHz
- MU-MIMO 4x4 (3 radios)
- Seamless roaming 802.11r/k/v
- 1 Ethernet port 1G, 1x5G
- PoE 48 V/56 V (IEEE 802.3af-2003)
- Centralized management and monitoring via SoftWLC/WLC

In development

WEP-550K



- Wi-Fi 7 (802.11be)
- 2,4/5/6 GHz
- MU-MIMO 4x4 (3 radios)
- Seamless roaming 802.11r/k/v
- 1 Ethernet port 1G, 1x5G
- PoE 48 V/56 V (IEEE 802.3af-2003)
- Centralized management and monitoring via SoftWLC/WLC

In development

Common features

- 320 MHz band
- 4096 (QAM) modulation
- MLO (multi-link operation)
- Throughput up to 30 Gbps

PTP solution For B2B customers



Ready to use

WB-3P-PTP2

- 2.4 GHz 802.11ax
- Transmit power up to 28 dBm
- Polling support
- Signal strength indication
- Range up to 20 km
- Offset antenna option
- Centralized network management and monitoring with Eltex EMS

WB-3P-PTP5

5 GHz 802.11ax – coming soon



ECCM

Centralized network equipment management system



Implemented in 2024

- Support for new switch models: MES2410-08DP, MES2300-08 AC, MES3710P rev.B DC
- Authorization of system users using LDAP/Microsoft Active Directory server
- Configuration of SSH, Telnet, SNMP parameters on ESR and WLC devices through the graphical interface (Services tab)
- Sending push notifications on events and problems
- Notification filtering customization: added the ability to specify the importance of events and problems to be notified to the user's e-mail and telegram



We are always ready to discuss, develop and customize products for your needs!



630020, Russia, Novosibirsk, Okruzhnaya street, 29V
9:00 AM – 6:00 PM (GMT+7)
Monday – Friday



+7 (383) 274-10-01, 274-48-48
eltex@eltex-co.ru; eltex-co.ru

ELTEX Enterprise Ltd. | Russian developer and manufacturer of communication equipment